

XGA and old legacy signals

The 29LS151E71UN/1 Series of 15.0" LCD monitors has been designed primarily for Slow Scan Legacy Systems as replacements for CRT monitors. They utilise a modern XGA TFT (1024 x 768 pixels) panel and a KME-designed Analog-Digital interface board. All elements have been packaged in a compact metal housing. (Dimensions are compatible with previous 15.1" series). Adjustable top & bottom fixing brackets allow easy mounting of the chassis to a front panel.

By special development of their own Signal Recognition and Scaling software KME has created a Universal flat panel monitor with unique 15kHz to 60kHz display capabilities. Some common Slow Scan Signal timings are factory pre-set. New ones may be added on request. Other signals, which are close to those listed, will give a display but some adjustment may be necessary for full screen performance. The final settings can be easily stored for future use.

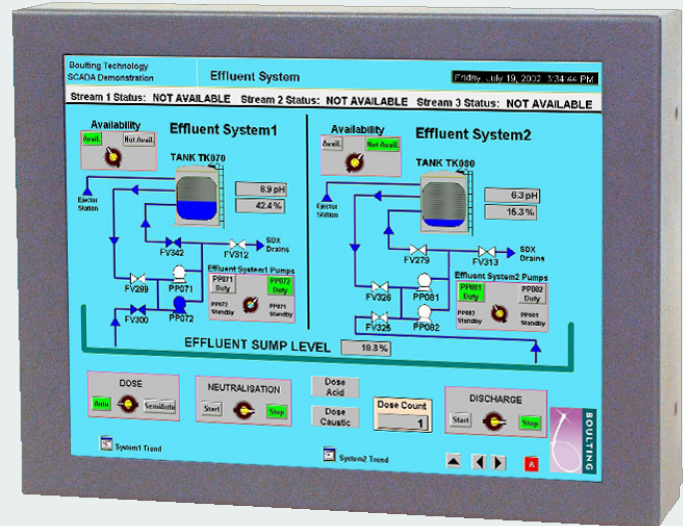
Features

- Specially Designed for Slow Scan Signals
- CGA, EGA & all VESA Standards up to XGA
- TTL, Analog & Interlaced Signals Accepted
- Accessory Cables for BNC & 9D Inputs
- Versatile Panel Mounting Brackets

Slow Scan Support - examples

H. kHz	V. Hz	Pixels	H. kHz	V. Hz	Pixels
15.625	50	714 * 288	15.63	50	560 * 275
15.63	60	808 * 238	15.72	60	564 * 240
15.72	60	508 * 240	15.72	60	604 * 240
15.72	60	640 * 200	16.10	50	564 * 304
16.276	70	640 * 220	16.79	70	577 * 215
17.85	50	508 * 338	21.83	60	640 * 350
20.65	50	640 * 384	24.78	60	640 * 384

15" CRT Replacement LCD Chassis Head 29LS151E71UN-1

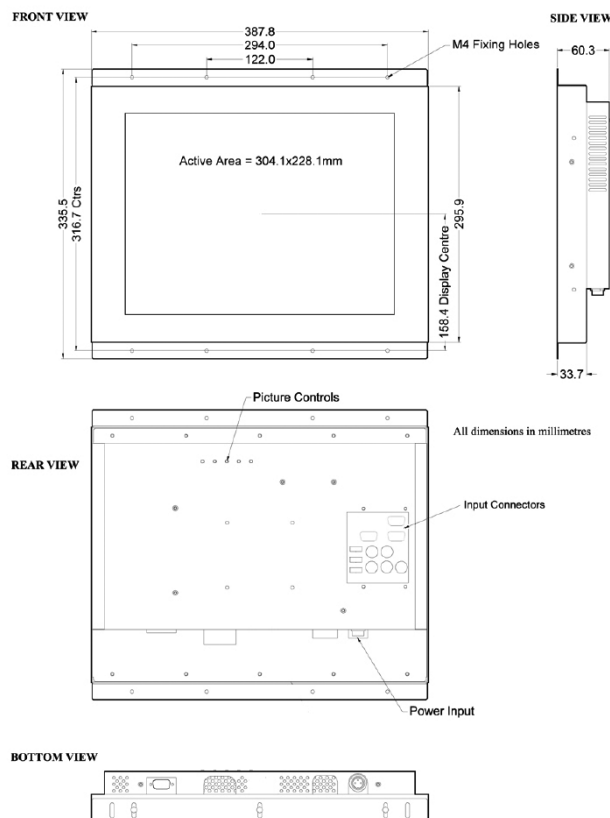


Fixing brackets not shown

Specifications: see next page

Specifications		
TFT Characteristics	Type Max. Resolution Active Display Area Contrast Ratio Brightness Viewing angles (at CR>10) Backlight life Nr. of colours	AM Colour TFT 1024 x 768 pixels 304 x 228 mm 450:1 typical 250 cd/m ² typical 130°H, 110°V 50,000 hrs typical 16 million
Sync. Type/Level	Separate H&V (+/-ve) TTL	or Composite (-ve) TTL or Sync-on-Green (-ve) 0.3V
Signal Sync	Analog RGB 0.7-1.0Vp-p	or TTL RGB>2.75Vp-p (via special TTL accessory cable)
Synchronisation Range	Horizontal scan Vertical scan	15 to 60kHz 40 to 100Hz
Multiscan Support	1024 x 768 XGA 800 x 600 SVGA 640 x 480 VGA + pre-programmed timings in 15-30kHz range	
Slow Scan Support <i>See examples table on previous page</i>	Pre-programmed Analog or TTL inputs in 15-40kHz range	
Power supply	12.0VDC	
Power consumption	35W (Max)	
Environmental	Storage temp.	-20°C to 60°C
	Operating temp.	0°C to 50°C
Dimensions	Monitor	388 x 336 x 58 mm
	Weight	5 kg approx
Input	15D BNC x5, 9D	
Housing	Painted aluminium	
User controls	Rear mounted	
On screen buttons	Brightness, Contrast, H/V Position & Size, Frequency, Frequency Fine	
Part numbers		
Model	29LS151E71UN/1	

Specifications are subject to change without notice.



• Monitors

- Desktop Monitors
- Large screen Monitors
- Custom-made Monitors
- 19" Rack Mount Monitors
- Rear Mount Monitors
- Monitors for Panel Mount
- Monitors for VESA Mount
- Kiosks
- Accessories

• Monitors – Specific applications

- Stainless Steel Monitors
- Car Displays
- Marine Monitors
- Military Monitors
- Replacement Monitors
- Train Monitors

• Panel PC's

- High Performance Systems
- Custom made Panel PC's
- Low Power Systems
- Extreme environments

• Pointing devices

- Accessories
- Touchpads
- Trackballs
- Trackball Modules
- Joysticks
- Custom made Pointing Devices

• Keyboards

- Desktop Keyboards with or without pointer
- Built-in Keyboards with or without pointer
- Cables & Connectors
- Custom made Keyboards



Mulder-Hardenberg, est. 1927, is the answer to professional demands in the domain of electronic related environments. We don't just sell products. We use our multidiscipline knowledge to provide the best possible solution, designed to your specific interest.

Contact details:

The Netherlands
Mulder-Hardenberg B.V.
Westerhoutpark 1a
2012 JL Haarlem
Tel.: +31 23 531 91 84
info_nl@m-h.biz

Belgium, France, Luxemburg
Mulder-Hardenberg N.V.
Hoge Weg 129
B-2940 Stabroek
Belgium
Tel.: +32 3 660 13 20
info_be@m-h.biz

Germany
Mulder-Hardenberg GmbH
Nordring 13
D-65719 Hofheim/Ts
Tel.: +49 6192 - 97 91 85
info_de@m-h.biz